



The Natural Capital Approach in Bury

Valuing Bury's Natural Capital

Greater Manchester (GM) is the home of the Urban Pioneer programme testing new tools and methods for investing in and managing the environment, supporting the implementation of Governments 25 Year Environment Plan

Natural capital is a way of describing the natural world as 'assets' that provide us with benefits, such as clean air, good health, food and water – all of which underpin our way of life.

A natural capital approach is about everyone understanding the benefits – ensuring the protection and enhancement of natural assets are fully considered in decision making, ultimately leading to positive change for people and wildlife

A natural capital account has been developed for GM and this is Bury's contribution. It aims to measure the benefits provided by Bury's natural assets to its businesses, public services and to all. Due to data availability and scale we have been able to capture 6 of the 13 benefits measured in the GM level accounts.



TOTAL BENEFITS

£51m the 'conservative' estimate of the value that Bury receives from its natural capital each year from the services we were able to value.

£1.4bn the total asset value of natural capital to Bury over the next 60 years

£107m

The total value of avoided healthcare costs over the next 60 years from the **positive difference** to physical and mental health, **reducing financial pressures and demand** on the NHS and Local Authority health providers.



Air Quality Regulation

Preventing **21** hospital admissions, avoiding **44** life year's lost and around **5** deaths per year



Physical Activity

9,227 people use green spaces to meet their physical activity guidelines giving over **315** Quality-adjusted life- years (QALY)



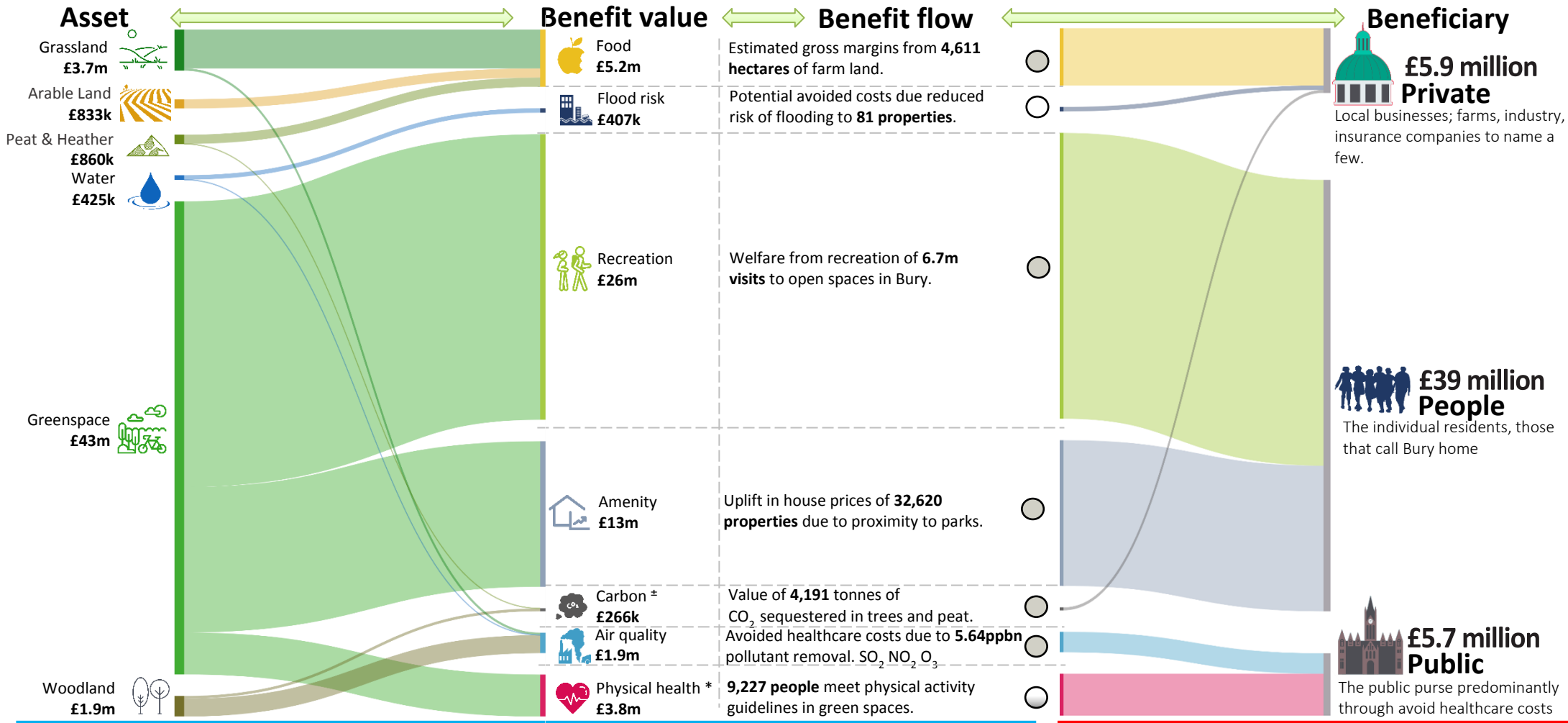
Carbon Sequestration

4,191 tonnes of CO_{2e} sequestered each year through Bury's trees and woodlands alone

Annual benefit from Bury's

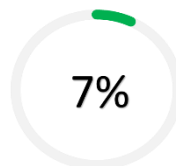
Natural Capital

These are the natural capital assets that have been valued as part of our work. It should be noted that the financial values are derived from the total value of all benefits provided by any given asset. The analysis is not exhaustive and does not include all benefits and services, including all those done in the City Region level accounts as previously described. Additionally, it does not capture all assets such as soil, but represents those considered the most critical in an urban context. All monetary values are approximate.



For transparency, we have given an indication of the level of confidence we have in these valuations using the following

- HIGH
- MEDIUM
- LOW



Contribution to GM

Bury contributes 7% of Greater Manchester's total natural capital value
Like for Like.

Find out more :

www.naturegreatermanchester.co.uk/projects/urban-pioneer

Contact us at :

urbanpioneer@environment-agency.gov.uk

Funded by the Environment Agency's GMMC Area team as part of the Urban Pioneer 2019